

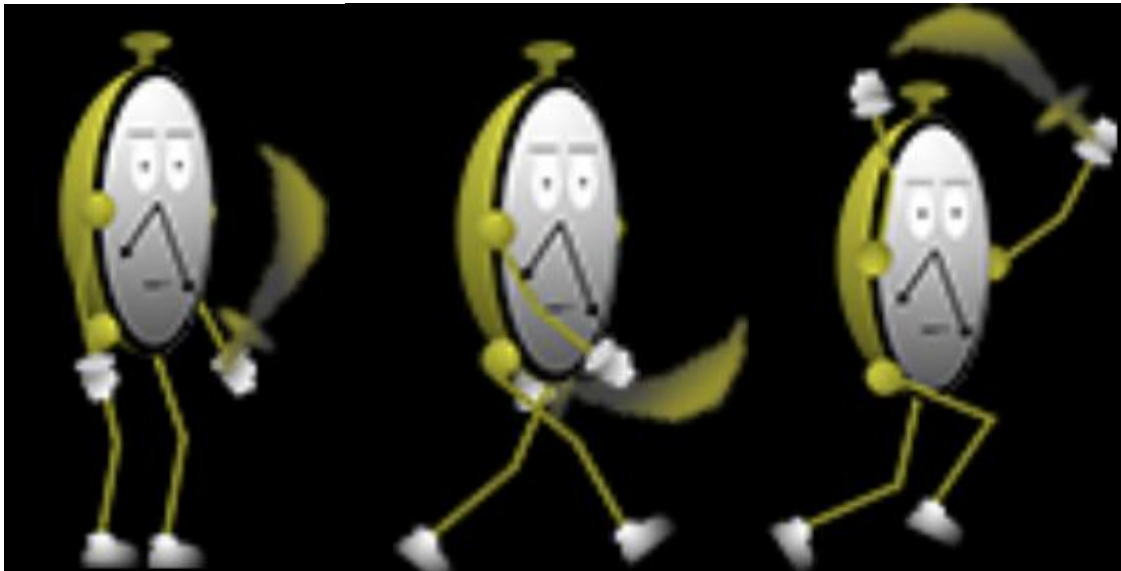
Power-up Prerequisites

Backup your game files!!!

- Create a PNG image of the power-up to be used in the game in Photoshop



- Make a copy of all your main character sprites
- Edit your existing character sprites by having them hold the power-up



- Proceed to create a new character sprite object with the following animations set:
 - Idle
 - Walk
 - Jump
 - Dead
 - Attack

