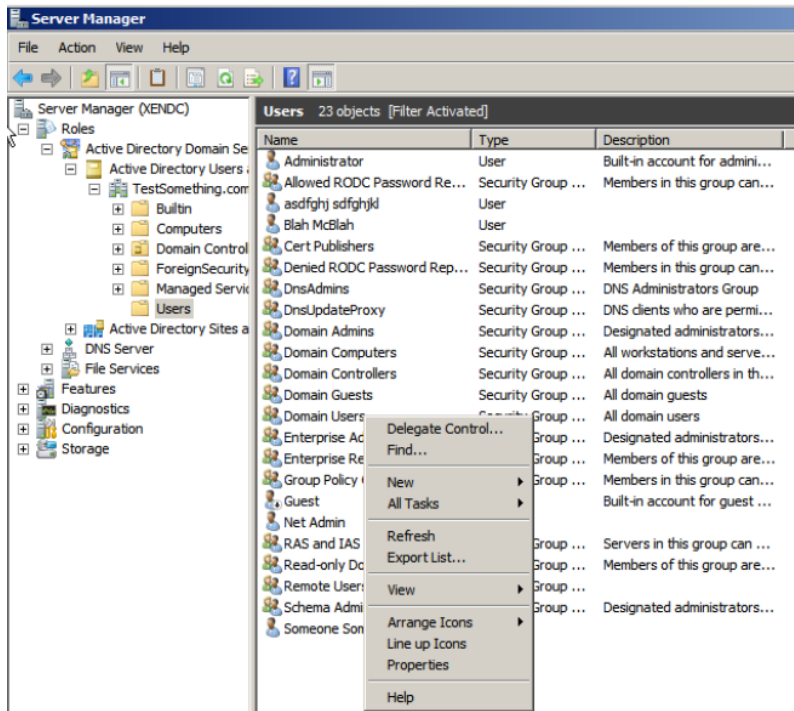


## Creating User Accounts / Adding Group Permissions

You will create 5 following Domain User accounts on your server:

- Netadmin
- Student1
- Student2
- Teacher1
- Teacher2



These users will have the following permissions assigned to them:

- Netadmin
  - Administrators
  - Domain admins
  - Remote users
- Student1
  - Domain users
- Student2
  - Domain users
- Teacher1
  - Domain users
  - Administrators
- Teacher2
  - Domain users
  - Administrators

